

APPROVAL SHEET

Customer : 일오삼코리아

Model : S9KC100BH-S(A300)

Date : 2017.02.16

SIGNATURE FOR APPROVAL

DATE OF APPROVAL



SPG Co.,Ltd.

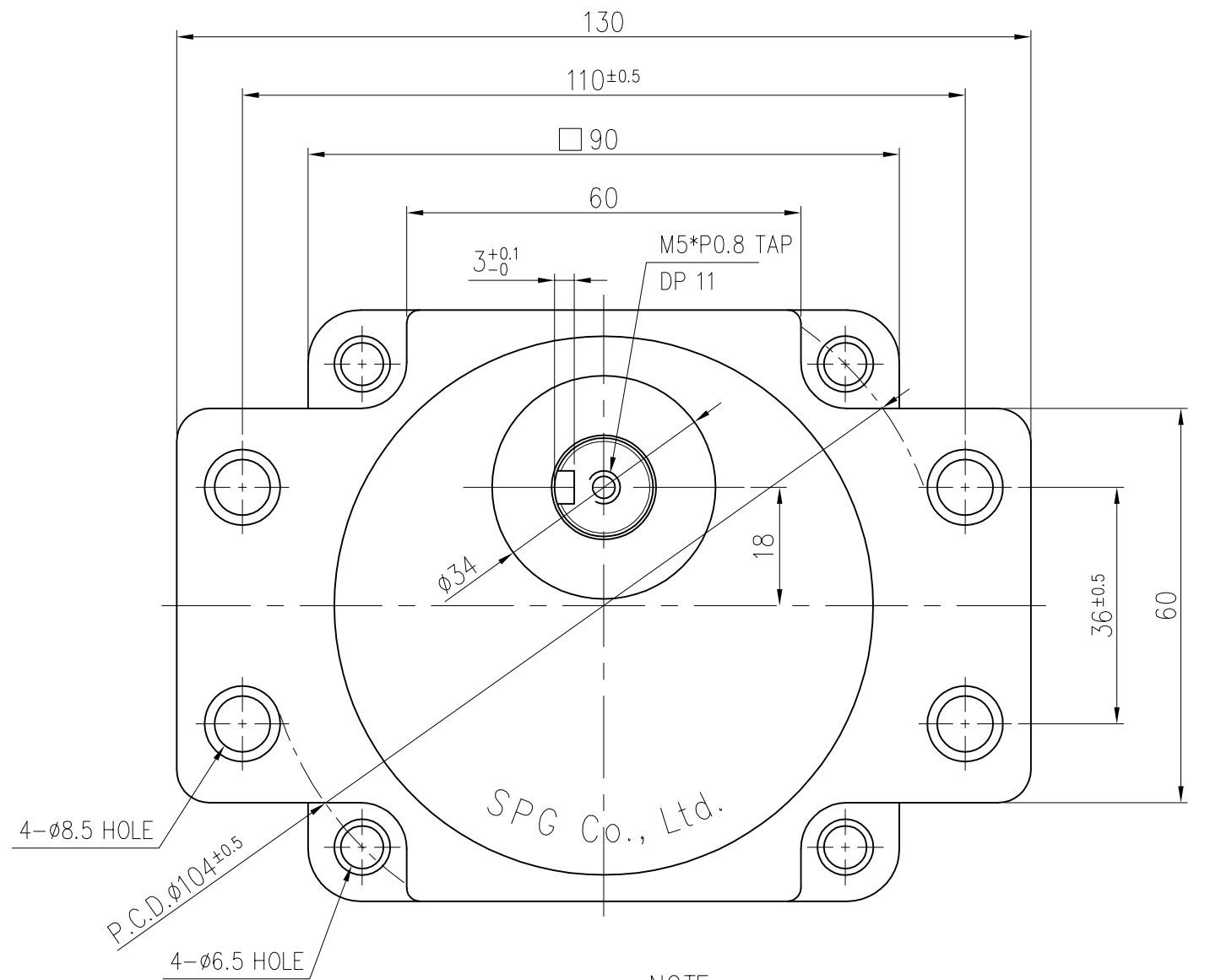
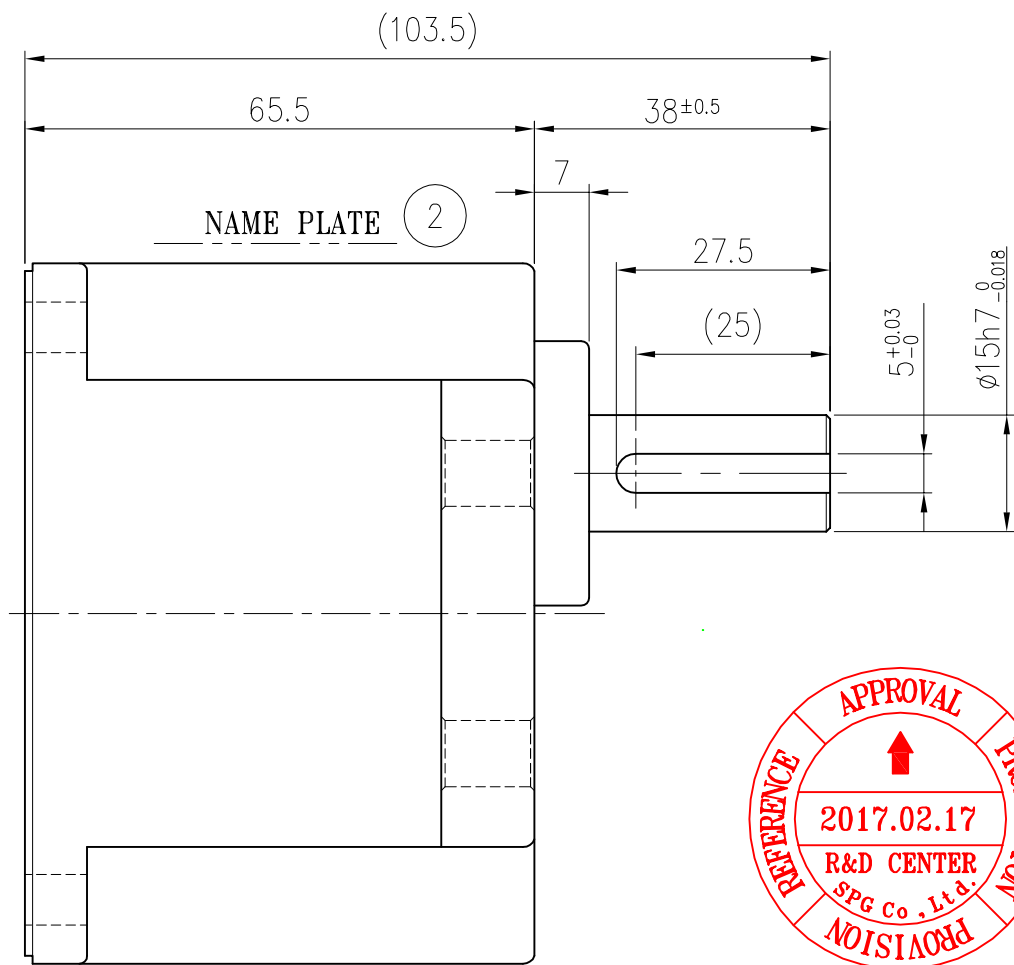
SPG Co.,Ltd.

TEL. : 82-32-820-8320~1

FAX. : 82-32-812-6218

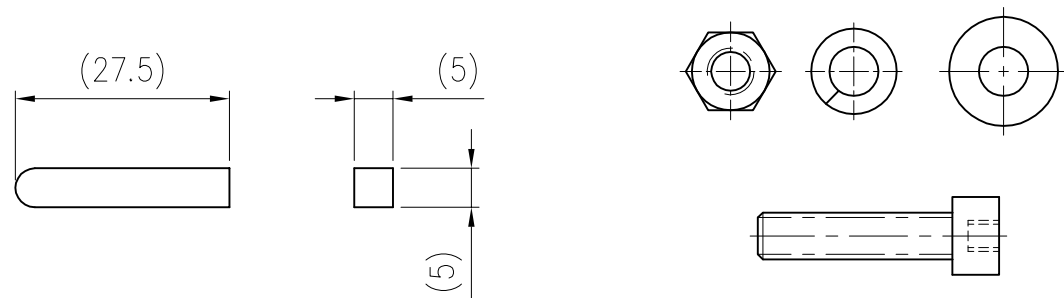
**45, Cheongneung-daero, 289beon-gil, Namdong-gu,
Incheon, Korea (67B 12L, Namdong complex, Gojan-dong)**

SPG Co.,Ltd.		
Drawn	Checked	Approved



NOTE

1. GEAR RATIO : 1/100 (5 STAGES)
2. SPINDLE END PLAY : 0.5mm Max.
3. ROTATION
 - * MOTOR C.W → HEAD C.C.W
 - * MOTOR C.C.W → HEAD C.W
4. PERMISSIBLE TORQUE : 200kg·cm



KEY ④

SCREW SET ③

4	KEY	S45C	1	5*5*L27.5	1R
3	SCREW SET		1	M6*L25	
2	NAME PLATE	PET FILM	1		
1	GEAR HEAD		1	□ 90	
ITEM	PART NAME	MATERIAL	Q'TY	SIZE	NOTE

날짜 DATE	서명 SIGN	변경내용 NOTE	변경이유 REVISION
재질 MATERIAL	표면처리 SURFACE FINISH	척도 SCALE	1/1 공차 TOLERANCE ± 1.0
제도 DRAWN	설계 DESIGN	검도 CHECK	승인 APPR.
J.Y.JUNG	Y.M.WON	N.Y.KIM	S.M.KIM
GEAR HEAD ASS'Y			
S9KC100BH-S(A300)			
SPG MOTOR SPG Co., Ltd.		작성일 DATE	도번 DWG NO.
		2017.02.16	A-200-3408-00